



Tasveld 4
3417 XS Montfoort (NL)



HLV-A / HLK-A GX5.3

Warning symbols

	Read the instructions		The minimum distance from lighted objects should be (0.5 meter)
	luminaires not suitable for covering with thermally insulated material.		Class III luminaire

1. General Safety Instructions



Read this instruction manual thoroughly before using the appliance and save it for future reference and if necessary pass the instruction manual on to a third party.

WARNING: When using electrical appliance, basic safety precautions should always be followed to reduce the risk of fire, electrical shock and personal injury.

1) General

Keep device out of reach of children and unauthorised persons.

Check if the electrical specifications of this luminaire are compatible with your installation.

WARNING: The power supply must be deactivated prior to assembly, maintenance, exchanging the bulb or cleaning processes. Remove the fuse or switch the fuse to OFF and secure from reactivation.

Care must be taken before drilling fixing holes to avoid any existing wiring or pipework that may be concealed

Warning: for indoor use only.

2) Electrical safety

Warning: if the external flexible cable or cord of this luminaire is damaged, it shall be exclusively replaced by the manufacture or his service agent or a similar qualified person in order to avoid a hazard.

Luminaire should be installed by authorized electrician only acc. to national wiring rules.

2. Specific Safety Rules

The luminaire shall, under no circumstance, be covered with insulating matting or similar material.

Warning: The lamp shade (and adjusting pole) will become very hot during operation. Never touch that with your bare hand or finger when the unit is switched ON or just switched OFF.

3. Environmental protection

CAUTION!



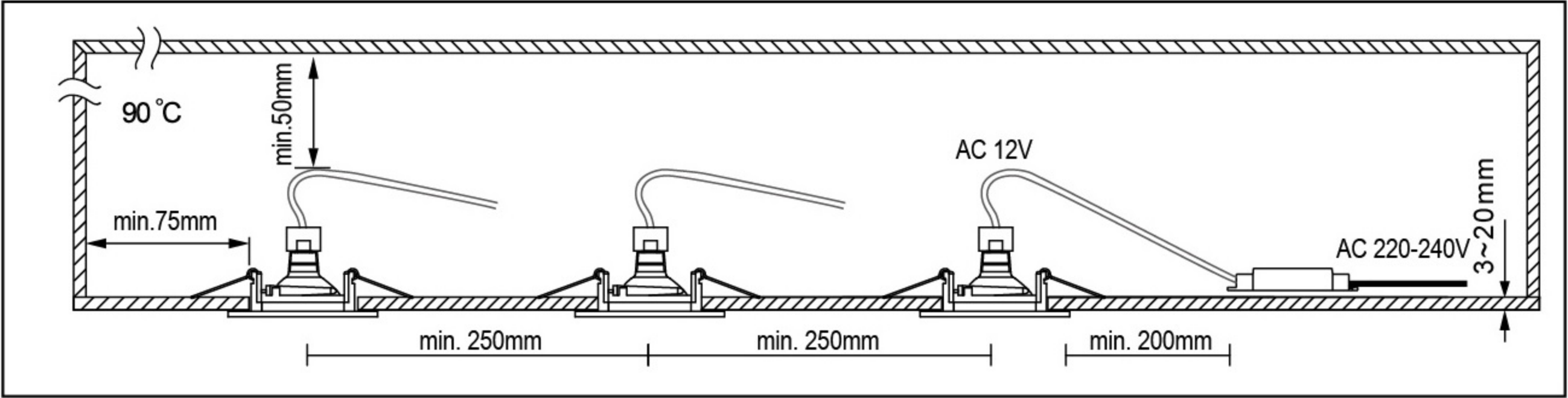
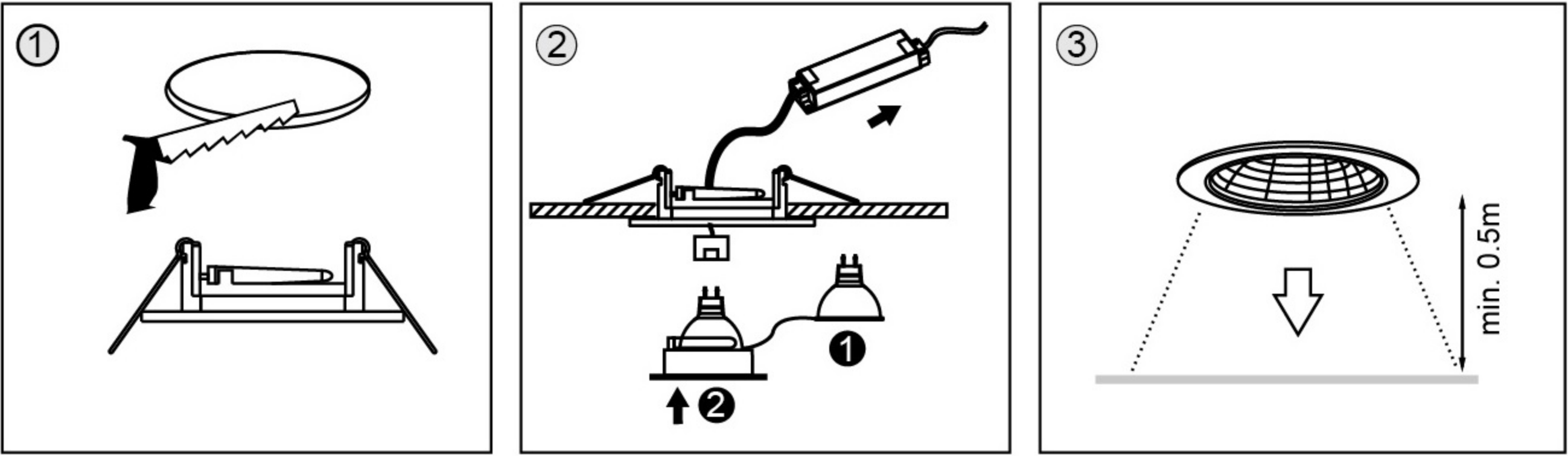
Electrical products must not be thrown out with domestic waste. They must be taken to a communal collecting point for environmentally friendly disposal in accordance with local regulations. Contact your local authorities or stockiest for advice on recycling. The packaging material is recyclable. Dispose of the packaging in an environmentally friendly manner and make it available for the recyclable material collection-service.

4. Appliance specifications

TECHNICAL CHARACTERISTICS

Item code	Rated voltage	Rated wattage	Bulb rating	Protection class	IP number	Dimension	Cutting
1700X	12 V	MAX.50W	GX5.3	III	IP20	D80mm,H33mm	68mm
1702X	12 V	MAX.50W	GX5.3	III	IP20	D82mm,H26mm	68mm

5. Installation / Assembly / Parts Identification / Drawings



6. Maintenance / Cleaning

Disconnect from mains before maintenance or cleaning.

Repairs should only be carried out by qualified persons and using genuine spare parts. Inappropriate repairing could cause significant danger.

Always use bulbs according to specifications listed in this manual.

WARNING: The use of any accessory not specified in this manual may present a risk of personal injury.